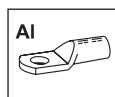


Papuci aluminiu tubulari

▪ Papuci aluminiu, 10 - 400 mm²

- Pt. conductoare de aluminiu conf. normei DIN 48201 si DIN EN 50182, fara tractiune longitudinala
- Conductoarele sectoriale trebuiesc rotunjite inainte de pozarea conecticii
- Cu pasta de contact pt. eliminarea oxizilor de AL non-conductivi



Caracteristici

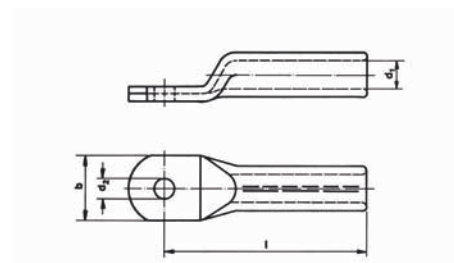
- Produs conform normelor interne germane DIN 46329
- Cu marcaje pentru pozitia corecta a sertizarii

Material

- Aluminiu electrotehnic

Suprafata

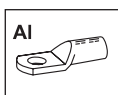
- Lucioasa



Sectiune mm ²	rm/sm	se	Diam. gaura Ø	Cod	Diam. ext. mm	Dimensiune mm				Numar sertizare / conectica cu presa mec.	Greutate/ 100 buc. ~ kg	buc/cutie	
						d1	d2	b	l				
10		--	M6	202R6	10	5.0	6.5	16	52	4	2	0.86	25
		--	M8	202R8	10	5.0	8.5	18	52	4	2	0.88	25
16		25	M8	203R8	12	5.8	8.5	18	52	4	2	1.37	10
		25	M10	203R10	12	5.8	10.5	18	52	4	2	1.39	10
25		35	M8	204R8	12	6.8	8.5	18	60	4	2	1.41	10
		35	M10	204R10	12	6.8	10.5	18	60	4	2	1.46	10
35		50	M10	205R10	14	8.0	10.5	21	67	5	2	2.08	10
		50	M12	205R12	14	8.0	13.0	21	67	5	2	2.05	10
50		70	M10	206R10	16	9.8	10.5	25	72	5	2	2.68	10
		70	M12	206R12	16	9.8	13.0	25	72	5	2	2.73	10
70		95	M10	207R10	18	11.2	10.5	28	86	6	3	4.42	10
		95	M12	207R12	18	11.2	13.0	28	86	6	3	4.27	10
95		120	M10	208R10	22	13.2	10.5	32	90	6	3	7.40	4
		120	M12	208R12	22	13.2	13.0	32	90	6	3	7.50	4
		120	M16	208R16	22	13.2	17.0	34	90	6	3	7.30	4
120		150	M12	209R12	22	14.7	13.0	32	91	6	3	6.68	4
		150	M16	209R16	22	14.7	17.0	34	91	6	3	6.41	4
150		185	M12	210R12	25	16.3	13.0	35	103	6	3	9.64	4
		185	M16	210R16	25	16.3	17.0	35	103	6	3	9.24	4
		185	M20	210R20	25	16.3	21.0	41	103	6	3	9.40	4
185		240	M12	211R12	28	18.3	13.0	40	106	6	3	12.61	1
		240	M16	211R16	28	18.3	17.0	40	106	6	3	11.92	1
		240	M20	211R20	28	18.3	21.0	40	106	6	3	13.10	1
240		300	M12	212R12	32	21.0	13.0	45	116	8	3	18.30	1
		300	M16	212R16	32	21.0	17.0	45	116	8	3	17.60	1
		300	M20	212R20	32	21.0	21.0	45	116	8	3	17.30	1
300		--	M16	213R16	34	23.3	17.0	49	124	8	3	17.50	1
		--	M20	213R20	34	23.3	21.0	49	124	8	3	17.30	1
400		--	M16	214R16	38	26.0	17.0	58	165	--	4	32.20	1
		--	M20	214R20	38	26.0	21.0	58	165	--	4	31.90	1

rm = conductor rotund multifilar / sm = conductor sectorial multifilar / se = conductor sectorial unifilar
 sm/se - conductoarele sectoriale trebuiesc rotunjite inainte de pozarea conecticii

Papuci aluminii turnati



▪ Papuci aluminii, cu bariera, varianta DIN 16 - 500 mm²

- Varianta cu bariera, recomandat pt. uz exterior
- Pt. conductoare de aluminii conf. normei DIN 48201 si DIN EN 50182, fara tractiune longitudinala
- Cu pasta de contact pt. eliminarea oxizilor de AL non-conductivi

Caracteristici

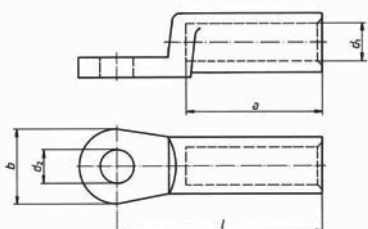
- Produs conform normelor interne germane DIN 46329
- Cu marcaje pentru pozitia corecta a sertizarii

Material

- Aluminii electrotehnic

Suprafata

- Lucioasa



Sectiune mm ²	Diam. gaura Ø	Cod	Diam. ext. mm	Dimensiune mm						Numar sertizare / conectica cu presa mec.	Greutate/ 100 buc. ~ kg	buc/cutie	
				rm/sm	se	d1	d2	b	l				a
16	25	M8	263R8	12	5.8	8.4	20	50	30	4	2	1.20	4
	25	M10	263R10	12	5.8	10.5	20	50	30	4	2	1.20	4
25	35	M8	264R8	12	6.8	8.4	25	50	30	4	2	1.30	4
	35	M10	264R10	12	6.8	10.5	25	50	30	4	2	1.24	4
	35	M12	264R12	12	6.8	13.0	25	50	30	4	2	1.22	4
35	50	M8	265R8	14	8.0	8.4	25	62	42	5	2	2.50	4
	50	M10	265R10	14	8.0	10.5	25	62	42	5	2	1.98	4
	50	M12	265R12	14	8.0	13.0	25	62	42	5	2	2.50	4
50	70	M8	266R8	16	9.8	8.4	25	62	42	5	2	2.75	4
	70	M10	266R10	16	9.8	10.5	25	62	42	5	2	2.70	4
	70	M12	266R12	16	9.8	13.0	25	62	42	5	2	2.65	4
70	95	M8	267R8	18	11.2	8.4	25	72	52	6	3	3.45	4
	95	M10	267R10	18	11.2	10.5	25	72	52	6	3	3.80	4
	95	M12	267R12	18	11.2	13.0	25	72	52	6	3	3.35	4
95	120	M10	268R10	22	13.2	10.5	25	75	56	6	3	6.90	4
	120	M12	268R12	22	13.2	13.0	25	75	56	6	3	4.92	4
	120	M16	*268R16	22	13.2	17.0	25	75	56	6	3	6.00	4
120	150	M10	269R10	22	14.7	10.5	30	80	56	6	3	5.95	4
	150	M12	269R12	22	14.7	13.0	30	80	56	6	3	5.84	4
	150	M16	269R16	22	14.7	17.0	30	80	56	6	3	6.60	4
150	185	M10	270R10	25	16.3	10.5	30	90	60	6	3	8.50	4
	185	M12	270R12	25	16.3	13.0	30	90	60	6	3	7.73	4
	185	M16	270R16	25	16.3	17.0	30	90	60	6	3	7.60	4
	185	M20	*270R20	25	16.3	21.0	30	90	60	6	3	8.20	4
185	240	M10	271R10	28	18.3	10.5	30	91	60	6	3	11.00	4
	240	M12	271R12	28	18.3	13.0	30	91	60	6	3	9.88	4
	240	M16	271R16	28	18.3	17.0	30	91	60	6	3	10.10	4
	240	M20	*271R20	28	18.3	21.0	30	91	60	6	3	10.00	4
240	300	M10	*272R10	32	21.0	10.5	38	103	70	8	3	15.50	4
	300	M12	272R12	32	21.0	13.0	38	103	70	8	3	13.80	4
	300	M16	272R16	32	21.0	17.0	38	103	70	8	3	13.48	4
	300	M20	272R20	32	21.0	21.0	38	103	70	8	3	15.00	4
300	--	M12	273R12	34	23.3	13.0	38	103	70	8	3	17.60	1
	--	M16	273R16	34	23.3	17.0	38	103	70	8	3	17.28	1
	--	M20	273R20	34	23.3	21.0	38	103	70	8	3	17.40	1
400	--	M12	274R12	38	26.0	13.0	38	116	73	--	4	38.00	1
	--	M16	274R16	38	26.0	17.0	38	116	73	--	4	37.40	1
	--	M20	274R20	38	26.0	21.0	38	116	73	--	4	40.20	1
500	--	M12	275R12	44	29.0	13.0	44	122	79	--	4	43.70	1
	--	M16	275R16	44	29.0	17.0	44	122	79	--	4	43.30	1
	--	M20	275R20	44	29.0	21.0	44	122	79	--	4	43.00	1

rm = conductor rotund multifilar / sm = conductor sectorial multifilar / se = conductor sectorial unifilar
 sm/se - conductoarele sectoriale trebuiesc rotunjite inainte de pozarea conecticii