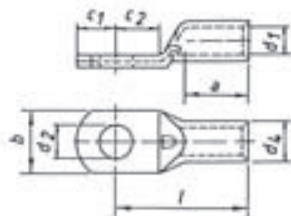


Papuci cupru tubulari



- Papuci cupru 0.75 - 6 mm², tip standard

- Pentru conductoare cu lite fine din cupru, de ex. DIN EN 60228 clasa 5

Caracteristici

- Cu gaura de inspectie
- Tratat prin recoacere pt. optimizarea proprietatilor materialului si a sertizarii
- Executat după cote stricte pentru obtinerea unui contact electric perfect

Material

- Cupru EN 13600

Suprafata

- Stanata

| Secțiune mm ² | Diam. gaură Ø | Cod | Dimensiune mm | | | | | | | | Greutate /100 buc ~ kg | buc/cutie |
|-----------------------------|---------------------|------|---------------|---|------|-----|-----|------|-----|----|------------------------------|-----------|
| | | | d1 | a | b | d2 | d4 | c1 | c2 | l | | |
| 0.75 | M3 | 91R3 | 1.3 | 6 | 6.0 | 3.2 | 2.8 | 3.25 | 4.0 | 12 | 0.060 | 100 |
| | M4 | 91R4 | 1.3 | 6 | 6.5 | 4.3 | 2.8 | 4.00 | 5.0 | 13 | 0.060 | 100 |
| | M5 | 91R5 | 1.3 | 6 | 7.5 | 5.3 | 2.8 | 4.75 | 5.5 | 14 | 0.060 | 100 |
| 1.5 | M3 | 92R3 | 1.8 | 6 | 6.5 | 3.2 | 3.3 | 3.25 | 4.0 | 12 | 0.080 | 100 |
| | M4 | 92R4 | 1.8 | 6 | 6.5 | 4.3 | 3.3 | 4.00 | 5.0 | 13 | 0.080 | 100 |
| | M5 | 92R5 | 1.8 | 6 | 7.5 | 5.3 | 3.3 | 4.75 | 5.5 | 14 | 0.080 | 100 |
| | M6 | 92R6 | 1.8 | 6 | 9.0 | 6.5 | 3.3 | 6.50 | 6.5 | 16 | 0.090 | 100 |
| 2.5 | M3 | 93R3 | 2.3 | 6 | 7.5 | 3.2 | 4.2 | 3.25 | 4.0 | 12 | 0.120 | 100 |
| | M4 | 93R4 | 2.3 | 6 | 7.5 | 4.3 | 4.2 | 4.00 | 5.0 | 13 | 0.120 | 100 |
| | M5 | 93R5 | 2.3 | 6 | 8.5 | 5.3 | 4.2 | 4.75 | 5.5 | 14 | 0.130 | 100 |
| | M6 | 93R6 | 2.3 | 6 | 9.5 | 6.5 | 4.2 | 6.50 | 6.5 | 16 | 0.150 | 100 |
| | M8 | 93R8 | 2.3 | 6 | 13.0 | 8.5 | 4.2 | 7.75 | 9.5 | 20 | 0.180 | 100 |
| 4 | M4 | 94R4 | 3.0 | 8 | 8.5 | 4.3 | 5.0 | 4.75 | 5.5 | 18 | 0.210 | 100 |
| | M5 | 94R5 | 3.0 | 8 | 9.0 | 5.3 | 5.0 | 4.75 | 6.0 | 18 | 0.213 | 100 |
| | M6 | 94R6 | 3.0 | 8 | 10.0 | 6.5 | 5.0 | 6.50 | 6.5 | 19 | 0.220 | 100 |
| | M8 | 94R8 | 3.0 | 8 | 13.0 | 8.5 | 5.0 | 8.50 | 9.5 | 22 | 0.280 | 100 |
| 6 | M4 | 95R4 | 4.0 | 9 | 9.5 | 4.3 | 6.0 | 5.00 | 5.5 | 18 | 0.290 | 100 |
| | M5 | 95R5 | 4.0 | 9 | 9.5 | 5.3 | 6.0 | 6.00 | 6.0 | 19 | 0.300 | 100 |
| | M6 | 95R6 | 4.0 | 9 | 10.0 | 6.5 | 6.0 | 7.00 | 6.5 | 19 | 0.300 | 100 |
| | M8 | 95R8 | 4.0 | 9 | 14.0 | 8.5 | 6.0 | 8.50 | 9.5 | 22 | 0.320 | 100 |

▪ Papuci cupru 0.75 - 16 mm², tip furca

- pana la 6 mm² pentru conductoare cu lite fine din cupru, clasa 5
- sectiunea 10 mm² si 16 mm² pentru conductoare multifilare din cupru, clasa 2

Caracteristici

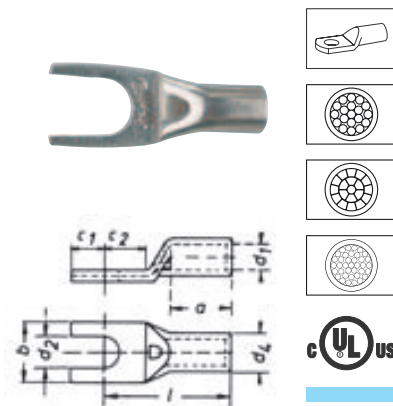
- Cu gaura de inspectie
- Tratat prin recoacere pt. optimizarea proprietatilor materialului si a sertizarii
- Executat după cote stricte pentru obtinerea unui contact electric perfect

Material

- Cupru EN 13600

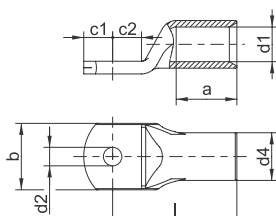
Suprafata

- Stanata



| Sectiune mm ² | Diam. gaură Ø | Cod | Dimensiune mm | | | | | | | | Greutate /100 buc | buc/cutie |
|-----------------------------|---------------------|------|---------------|----|------|-----|-----|-------|------|----|----------------------|-----------|
| | | | d1 | a | b | d2 | d4 | c1 | c2 | l | | |
| 0.75 | M3 | 91C3 | 1.3 | 6 | 6.0 | 3.2 | 2.8 | 3.25 | 4.0 | 12 | 0.06 | 100 |
| | M4 | 91C4 | 1.3 | 6 | 6.5 | 4.3 | 2.8 | 4.00 | 5.0 | 13 | 0.05 | 100 |
| | M5 | 91C5 | 1.3 | 6 | 7.5 | 5.3 | 2.8 | 4.75 | 5.5 | 14 | 0.06 | 100 |
| 1.5 | M3 | 92C3 | 1.8 | 6 | 6.5 | 3.2 | 3.3 | 3.25 | 4.0 | 12 | 0.07 | 100 |
| | M4 | 92C4 | 1.8 | 6 | 6.5 | 4.3 | 3.3 | 4.00 | 5.0 | 13 | 0.07 | 100 |
| | M5 | 92C5 | 1.8 | 6 | 7.5 | 5.3 | 3.3 | 4.75 | 5.5 | 14 | 0.07 | 100 |
| | M6 | 92C6 | 1.8 | 6 | 9.0 | 6.5 | 3.3 | 6.50 | 6.5 | 16 | 0.08 | 100 |
| 2.5 | M3 | 93C3 | 2.3 | 6 | 7.5 | 3.2 | 4.2 | 3.25 | 4.0 | 12 | 0.12 | 100 |
| | M4 | 93C4 | 2.3 | 6 | 7.5 | 4.3 | 4.2 | 4.00 | 5.0 | 13 | 0.11 | 100 |
| | M5 | 93C5 | 2.3 | 6 | 8.5 | 5.3 | 4.2 | 4.75 | 5.5 | 14 | 0.12 | 100 |
| | M6 | 93C6 | 2.3 | 6 | 9.5 | 6.5 | 4.2 | 6.50 | 6.5 | 16 | 0.10 | 100 |
| 4 | M4 | 94C4 | 3.0 | 8 | 8.5 | 4.3 | 5.0 | 4.75 | 5.5 | 17 | 0.19 | 100 |
| | M5 | 94C5 | 3.0 | 8 | 9.0 | 5.3 | 5.0 | 4.75 | 6.0 | 17 | 0.19 | 100 |
| | M6 | 94C6 | 3.0 | 8 | 10.0 | 6.5 | 5.0 | 6.50 | 6.5 | 19 | 0.21 | 100 |
| | M8 | 94C8 | 3.0 | 8 | 13.0 | 8.5 | 5.0 | 8.50 | 9.5 | 22 | 0.24 | 100 |
| 6 | M4 | 95C4 | 4.0 | 9 | 9.5 | 4.3 | 6.0 | 5.00 | 5.5 | 18 | 0.27 | 100 |
| | M5 | 95C5 | 4.0 | 9 | 9.5 | 5.3 | 6.0 | 6.00 | 6.0 | 19 | 0.32 | 100 |
| | M6 | 95C6 | 4.0 | 9 | 10.0 | 6.5 | 6.0 | 7.00 | 6.5 | 19 | 0.27 | 100 |
| | M8 | 95C8 | 4.0 | 9 | 14.0 | 8.5 | 6.0 | 8.50 | 9.0 | 22 | 0.31 | 100 |
| 10 | M5 | 96C5 | 4.5 | 10 | 12.0 | 5.5 | 7.0 | 6.50 | 7.5 | 22 | 0.45 | 100 |
| | M6 | 96C6 | 4.5 | 10 | 12.0 | 6.5 | 7.0 | 6.50 | 7.5 | 22 | 0.41 | 100 |
| | M8 | 96C8 | 4.5 | 10 | 15.0 | 8.5 | 7.0 | 10.00 | 10.0 | 25 | 0.52 | 100 |
| 16 | M5 | 97C5 | 5.5 | 13 | 12.0 | 5.5 | 8.5 | 5.50 | 6.5 | 26 | 0.81 | 100 |
| | M6 | 97C6 | 5.5 | 13 | 12.0 | 6.5 | 8.5 | 6.25 | 7.5 | 27 | 0.81 | 100 |
| | M8 | 97C8 | 5.5 | 13 | 15.0 | 8.5 | 8.5 | 8.50 | 9.5 | 29 | 0.90 | 100 |

Papuci cupru tubulari



▪ Papuci cupru 6 - 400 mm², tip standard

- Pentru conductoare multifilare din cupru, de ex. DIN EN 60228 clasa 2
- Pentru conductoare sectoriale rotunjite din cupru
- In combinatie cu presa EKM60ID pot fi folosite si la conductoare cu lite fine

Caracteristici

- Tratată prin recoacere pt. optimizarea proprietatilor materialului si a sertizarii
- Testat la vibratii conf. DIN EN 61373 clasa 1B
- Executat după cote stricte pentru obtinerea unui contact electric perfect



Material

- Cupru EN 13600



Suprafata

- Stanata



| Secțiune mm ² | Diam. gaură Ø | Cod | Dimensiune mm | | | | | | | | Greutate /100 buc ~ kg | buc/cutie |
|-----------------------------|---------------------|------|---------------|----|----|------|------|-------|------|----|------------------------------|-----------|
| | | | d1 | a | b | d2 | d4 | c1 | c2 | l | | |
| 6 | M5 | 1R5 | 3.5 | 9 | 10 | 5.5 | 6.5 | 6.50 | 7.5 | 21 | 0.50 | 100 |
| | M6 | 1R6 | 3.5 | 9 | 12 | 6.5 | 6.5 | 6.50 | 7.5 | 21 | 0.47 | 100 |
| | M8 | 1R8 | 3.5 | 9 | 15 | 8.5 | 6.5 | 10.00 | 10.0 | 23 | 0.54 | 100 |
| | M10 | 1R10 | 3.5 | 9 | 17 | 10.5 | 6.5 | 12.00 | 12.0 | 25 | 0.59 | 100 |
| | M12 | 1R12 | 3.5 | 9 | 19 | 13.0 | 6.5 | 13.00 | 13.0 | 28 | 0.63 | 100 |
| 10 | M5 | 2R5 | 4.5 | 10 | 12 | 5.5 | 7.0 | 6.50 | 7.5 | 22 | 0.50 | 100 |
| | M6 | 2R6 | 4.5 | 10 | 12 | 6.5 | 7.0 | 6.50 | 7.5 | 22 | 0.49 | 100 |
| | M8 | 2R8 | 4.5 | 10 | 15 | 8.5 | 7.0 | 10.00 | 10.0 | 25 | 0.58 | 100 |
| | M10 | 2R10 | 4.5 | 10 | 17 | 10.5 | 7.0 | 12.00 | 12.0 | 27 | 0.62 | 100 |
| | M12 | 2R12 | 4.5 | 10 | 19 | 13.0 | 7.0 | 13.00 | 13.0 | 29 | 0.64 | 100 |
| 16 | M5 | 3R5 | 5.5 | 13 | 12 | 5.5 | 8.5 | 5.50 | 6.5 | 26 | 0.84 | 100 |
| | M6 | 3R6 | 5.5 | 13 | 12 | 6.5 | 8.5 | 6.25 | 7.5 | 27 | 0.86 | 100 |
| | M8 | 3R8 | 5.5 | 13 | 15 | 8.5 | 8.5 | 8.50 | 9.5 | 29 | 0.93 | 100 |
| | M10 | 3R10 | 5.5 | 13 | 17 | 10.5 | 8.5 | 10.50 | 11.5 | 31 | 0.99 | 100 |
| | M12 | 3R12 | 5.5 | 13 | 19 | 13.0 | 8.5 | 12.00 | 13.0 | 33 | 1.02 | 100 |
| 25 | M5 | 4R5 | 7.0 | 15 | 14 | 5.5 | 10.0 | 7.50 | 7.5 | 30 | 1.22 | 25 |
| | M6 | 4R6 | 7.0 | 15 | 14 | 6.5 | 10.0 | 7.50 | 7.5 | 30 | 1.20 | 100 |
| | M8 | 4R8 | 7.0 | 15 | 16 | 8.5 | 10.0 | 10.00 | 10.0 | 32 | 1.31 | 100 |
| | M10 | 4R10 | 7.0 | 15 | 18 | 10.5 | 10.0 | 12.00 | 12.0 | 34 | 1.57 | 100 |
| | M12 | 4R12 | 7.0 | 15 | 19 | 13.0 | 10.0 | 13.00 | 13.0 | 35 | 1.39 | 25 |
| | M14 | 4R14 | 7.0 | 15 | 21 | 15.0 | 10.0 | 14.50 | 14.5 | 38 | 1.49 | 25 |
| 35 | M6 | 5R6 | 8.5 | 17 | 17 | 6.5 | 12.0 | 7.50 | 7.5 | 32 | 1.85 | 100 |
| | M8 | 5R8 | 8.5 | 17 | 17 | 8.5 | 12.0 | 10.00 | 10.0 | 34 | 2.00 | 100 |
| | M10 | 5R10 | 8.5 | 17 | 19 | 10.5 | 12.0 | 12.00 | 12.0 | 37 | 2.13 | 100 |
| | M12 | 5R12 | 8.5 | 17 | 21 | 13.0 | 12.0 | 13.00 | 13.0 | 38 | 2.12 | 100 |
| | M14 | 5R14 | 8.5 | 17 | 21 | 15.0 | 12.0 | 14.50 | 14.5 | 40 | 2.18 | 25 |
| | M16 | 5R16 | 8.5 | 17 | 26 | 17.0 | 12.0 | 16.00 | 16.0 | 42 | 2.24 | 25 |
| 50 | M6 | 6R6 | 10.0 | 19 | 20 | 6.5 | 14.0 | 10.00 | 10.0 | 37 | 3.00 | 25 |
| | M8 | 6R8 | 10.0 | 19 | 20 | 8.5 | 14.0 | 10.00 | 10.0 | 37 | 2.93 | 50 |
| | M10 | 6R10 | 10.0 | 19 | 20 | 10.5 | 14.0 | 12.00 | 12.0 | 39 | 3.08 | 50 |
| | M12 | 6R12 | 10.0 | 19 | 23 | 13.0 | 14.0 | 13.00 | 13.0 | 43 | 3.23 | 50 |
| | M14 | 6R14 | 10.0 | 19 | 23 | 15.0 | 14.0 | 14.50 | 14.5 | 45 | 3.32 | 25 |
| | M16 | 6R16 | 10.0 | 19 | 28 | 17.0 | 14.0 | 16.00 | 16.0 | 46 | 3.38 | 25 |
| | M20 | 6R20 | 10.0 | 19 | 30 | 21.0 | 14.0 | 19.00 | 19.0 | 48 | 3.46 | 25 |

■ Papuci cupru 6 - 400 mm², tip standard

| Secțiune mm ² | Diam. gaură Ø | Cod | Dimensiune mm | | | | | | | | Greutate /100 buc ~ kg | buc/cutie |
|-----------------------------|---------------------|-------|---------------|----|----|------|------|-------|------|----|------------------------------|-----------|
| | | | d1 | a | b | d2 | d4 | c1 | c2 | l | | |
| 70 | M6 | 7R6 | 12.0 | 21 | 23 | 6.5 | 16.5 | 10.00 | 10.0 | 43 | 4.49 | 25 |
| | M8 | 7R8 | 12.0 | 21 | 23 | 8.5 | 16.5 | 10.00 | 10.0 | 43 | 4.38 | 50 |
| | M10 | 7R10 | 12.0 | 21 | 23 | 10.5 | 16.5 | 12.00 | 12.0 | 44 | 4.54 | 50 |
| | M12 | 7R12 | 12.0 | 21 | 23 | 13.0 | 16.5 | 13.00 | 13.0 | 46 | 4.63 | 50 |
| | M14 | 7R14 | 12.0 | 21 | 23 | 15.0 | 16.5 | 14.50 | 14.5 | 48 | 4.76 | 25 |
| | M16 | 7R16 | 12.0 | 21 | 28 | 17.0 | 16.5 | 16.00 | 16.0 | 50 | 4.24 | 25 |
| | M20 | 7R20 | 12.0 | 21 | 30 | 21.0 | 16.5 | 19.00 | 19.0 | 53 | 5.09 | 25 |
| 95 | M8 | 8R8 | 13.5 | 25 | 26 | 8.5 | 18.0 | 12.0 | 12.0 | 48 | 5.44 | 25 |
| | M10 | 8R10 | 13.5 | 25 | 26 | 10.5 | 18.0 | 12.0 | 12.0 | 48 | 5.40 | 50 |
| | M12 | 8R12 | 13.5 | 25 | 26 | 13.0 | 18.0 | 13.0 | 13.0 | 49 | 5.56 | 50 |
| | M14 | 8R14 | 13.5 | 25 | 26 | 15.0 | 18.0 | 14.5 | 14.5 | 51 | 5.62 | 25 |
| | M16 | 8R16 | 13.5 | 25 | 28 | 17.0 | 18.0 | 16.0 | 16.0 | 54 | 5.82 | 50 |
| | M20 | 8R20 | 13.5 | 25 | 36 | 21.0 | 18.0 | 22.0 | 22.0 | 60 | 6.71 | 25 |
| 120 | M8 | 9R8 | 15.0 | 26 | 28 | 8.5 | 19.5 | 14.0 | 14.0 | 51 | 6.72 | 25 |
| | M10 | 9R10 | 15.0 | 26 | 28 | 10.5 | 19.5 | 14.0 | 14.0 | 51 | 6.57 | 50 |
| | M12 | 9R12 | 15.0 | 26 | 28 | 13.0 | 19.5 | 14.0 | 14.0 | 51 | 6.38 | 50 |
| | M14 | 9R14 | 15.0 | 26 | 28 | 15.0 | 19.5 | 15.0 | 15.0 | 52 | 6.45 | 25 |
| | M16 | 9R16 | 15.0 | 26 | 30 | 17.0 | 19.5 | 16.0 | 16.0 | 54 | 6.51 | 50 |
| | M20 | 9R20 | 15.0 | 26 | 36 | 21.0 | 19.5 | 22.0 | 22.0 | 63 | 7.74 | 25 |
| 150 | M8 | 10R8 | 16.5 | 30 | 31 | 8.5 | 21.0 | 14.0 | 14.0 | 56 | 7.78 | 10 |
| | M10 | 10R10 | 16.5 | 30 | 31 | 10.5 | 21.0 | 14.0 | 14.0 | 56 | 7.62 | 10 |
| | M12 | 10R12 | 16.5 | 30 | 31 | 13.0 | 21.0 | 15.0 | 15.0 | 57 | 7.73 | 25 |
| | M14 | 10R14 | 16.5 | 30 | 31 | 15.0 | 21.0 | 15.0 | 15.0 | 57 | 7.64 | 10 |
| | M16 | 10R16 | 16.5 | 30 | 31 | 17.0 | 21.0 | 16.0 | 16.0 | 58 | 7.53 | 10 |
| | M20 | 10R20 | 16.5 | 30 | 36 | 21.0 | 21.0 | 22.0 | 22.0 | 66 | 8.80 | 10 |
| 185 | M10 | 11R10 | 19.0 | 30 | 35 | 10.5 | 24.0 | 18.0 | 18.0 | 65 | 11.75 | 10 |
| | M12 | 11R12 | 19.0 | 30 | 35 | 13.0 | 24.0 | 18.0 | 18.0 | 65 | 11.82 | 10 |
| | M14 | 11R14 | 19.0 | 30 | 35 | 15.0 | 24.0 | 18.0 | 18.0 | 65 | 11.39 | 10 |
| | M16 | 11R16 | 19.0 | 30 | 35 | 17.0 | 24.0 | 18.0 | 18.0 | 65 | 11.24 | 25 |
| | M20 | 11R20 | 19.0 | 30 | 39 | 21.0 | 24.0 | 22.0 | 22.0 | 69 | 12.00 | 10 |
| 240 | M10 | 12R10 | 21.0 | 35 | 39 | 10.5 | 26.0 | 21.5 | 19.0 | 72 | 14.72 | 10 |
| | M12 | 12R12 | 21.0 | 35 | 39 | 13.0 | 26.0 | 21.5 | 19.0 | 72 | 14.55 | 10 |
| | M14 | 12R14 | 21.0 | 35 | 39 | 15.0 | 26.0 | 21.5 | 19.0 | 72 | 14.24 | 10 |
| | M16 | 12R16 | 21.0 | 35 | 39 | 17.0 | 26.0 | 21.5 | 19.0 | 72 | 14.09 | 25 |
| | M20 | 12R20 | 21.0 | 35 | 39 | 21.0 | 26.0 | 21.5 | 19.0 | 72 | 13.60 | 10 |
| 300 | M12 | 13R12 | 23.5 | 44 | 43 | 13.0 | 29.5 | 24.0 | 24.0 | 87 | 23.33 | 5 |
| | M14 | 13R14 | 23.5 | 44 | 43 | 15.0 | 29.5 | 24.0 | 24.0 | 87 | 23.14 | 5 |
| | M16 | 13R16 | 23.5 | 44 | 43 | 17.0 | 29.5 | 24.0 | 24.0 | 87 | 22.74 | 5 |
| | M20 | 13R20 | 23.5 | 44 | 43 | 21.0 | 29.5 | 24.0 | 24.0 | 87 | 22.19 | 5 |
| 400 | M12 | 14R12 | 27.0 | 44 | 49 | 13.0 | 34.0 | 24.0 | 24.0 | 90 | 32.41 | 5 |
| | M14 | 14R14 | 27.0 | 44 | 49 | 15.0 | 34.0 | 24.0 | 24.0 | 90 | 32.24 | 5 |
| | M16 | 14R16 | 27.0 | 44 | 49 | 17.0 | 34.0 | 24.0 | 24.0 | 90 | 31.98 | 5 |
| | M20 | 14R20 | 27.0 | 44 | 49 | 21.0 | 34.0 | 24.0 | 24.0 | 90 | 31.41 | 5 |

