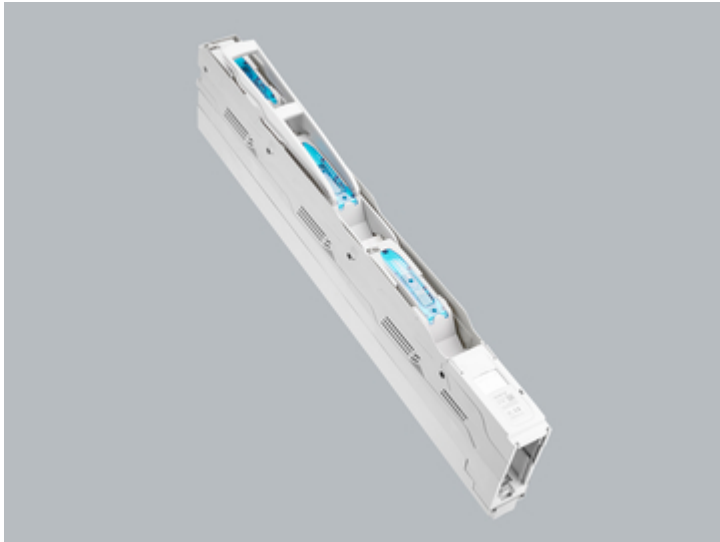


in-line fuse switch-disconnector 160 A (33 700)



Description

Article

Part No.: 33 700

QUADRON® 185Power

in-line fuse switch-disconnector 160 A

Bolt M8, 3-pole switchable

Size 00, tall version

for busbars 30, 40, 60, 80, 100, 120 x 10

System

185Power

Product group 12

Subgroup 52

pack size 1

EAN 4021267337001

Advantages of the product

Self-closing inspection holes are available in the cover.

Cover can be locked when closed.

Catalog page 2015 : 4/5, 4/6

eCl@ss 6.1 27142108
eCl@ss 7.1 27142108
ETIM 4.0 EC001040
ETIM 5.0 EC001040

Approvals

Standards

IEC 60947-1:2007 + A1:2010 + A2:2014
IEC 60947-3:2008 + A1:2012

Approvals

IEC (CB), CCC



Type number: QU185-00

CCC certificate: 2015010302769751

Product data

Electrical data

Rated current (IEC): 160 A
Rated voltage (IEC) AC: 690 V

Utilisation category AC (IEC 60947-3) :	AC-23B 160A/400V AC-22B 160A/500V
Utilisation category DC (IEC 60947-3) :	DC-20B max. voltage between the fuses: 1000V visible information required: Do not switch under load.

Power dissipation:

The power dissipation at a typical load of 80% of the rated current results to 17.9 W.
(The power dissipation for operation with rated current would be 28 W.)

Rated surge voltage U_{imp} : 8 kV
max. permitted voltage (IEC) AC: 1000
V

cond. rated short-circuit current with fuses: 100 kA / 500 V
100 kA / 690 V
approved with fuse links of characteristics: gG

for fuse links IEC 60269-2-1 (I) / DIN VDE 0636-201 size 00 up to 12W power dissipation

Special operating conditions corresponding to IEC / EN 61439-1 may yield to faulty activations of pilot switches and fuse monitors. The operating conditions have to be considered for the analysis of status signals.

Degree of protection IP20 at front, degree of protection near terminal depends on installation

Mechanical data

W x H x D: 50 x 670 x 189
Weight: 261.5 kg/100
for busbars: 30, 40, 60, 80, 100, 120 x 10

front degree of protection: IP20

Type of fastening:

can be screwed onto drilled busbar, undrilled mounting with terminal clamp
connection:
screw connection M8

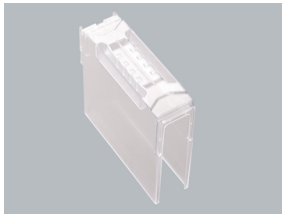
Terminal points

screw M8 :
Md 12 - 14 Nm

Material properties

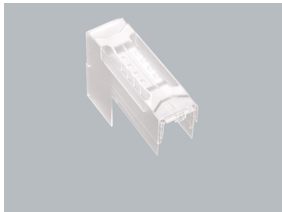
Main body:	temperature stability 130°C, self-extinguishing in acc. to UL 94, creepage resistance CTI 600, halogen-free
Contacts:	spring-loaded copper contacts, silver plated
Shock protection cover:	temperature stability 125°C, self-extinguishing in acc. to UL 94, creepage resistance CTI 200, halogen-free
Handle:	temperature stability 125°C, self-extinguishing in acc. to UL 94, creepage resistance CTI 600, halogen-free
Connecting screws:	screw M8, galvanized, chromized

Accessories



33 732

Terminal compartment cover
for 33 700; 33 770, 33 720, 33 771, 33 715, 33 772 and QUADRON®185Power
Speed Gr.00
size 00, high version, connection bottom



33 726

Terminal compartment cover
for 33 700, 33 770, 33 720, 33 771, 33 715, 33 772
Größe 00, hohe Version, Anschluss oben



33 734

Wedge clamp terminal
for Cu and Al 10 mm² – 95 mm²
size 00



33 737

Terminal clamp
for systems with touch-safe protection
size 00



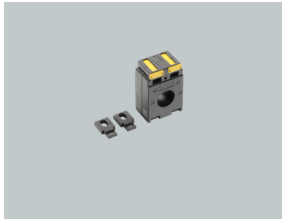
33 739

Terminal clamp
for busbar systems without system covers
size 00

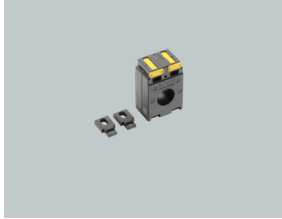


33 741

Current transformer 80 A / 5 A
doubleclamp / two clamping spaces with 2,5 x 4mm
2,5 VA / class 1, size 00

**33 742**

Current transformer 150 A / 5 A
2,5 VA / class 1
size 00

**33 749**

Current transformer 100 A / 5 A
1,5 VA / class 0,5
size 00

**33 751**

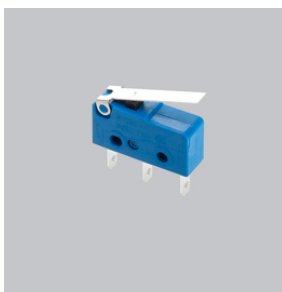
Current transformer 150 A / 5 A
2,5 VA / class 0,5
size 00

**33 750**

Current transformer 100 A / 5 A, with declaration of conformity
1,5 VA / class 0,5
size 00

**33 752**

Current transformer 150 A / 5 A, with declaration of conformity
2,5 VA / class 0,5
size 00

**33 156**

pilot switch
changeover 250 V AC / 5 A; 30 V DC / 4 A



33 113
lateral cover support
for front covers
size 00 - 3



33 758
lateral bearing strip
for front covers
size 00 - 3



33 755
Clamp connector
for Cu 16 mm² – 70 mm²
size 00