

in-line fuse switch-disconnector 400 A (33717)



Description

Part No.: 33717

QUADRON[®] 185Power

in-line fuse switch-disconnector 400 A

screw M12

size 2, 1-pole switchable

for busbars 30, 40, 60, 80, 100, 120 x 10

System

185Power

Product group 12

Subgroup 44

pack size 1

EAN 4021267337179

Advantages of the product

Self-closing inspection holes are available in the cover.
Cover can be locked when closed.

catalog page 2020 : 4.11, 4.12

eCl@ss 6.1 27142108

eCl@ss 7.1 27142108

ETIM 4.0 EC001046

ETIM 5.0 EC001046

Approvals

Standards

IEC 60947-1:2007 + A1:2010 + A2:2014

IEC 60947-3:2008 + A1:2012 + A2:2015

GB/T 14048.3

Approvals

IEC (CB) , CCC



type number: QU185-2

CCC certificate: 2015010302769224

Technical data

for fuse-links size: NH 2
fuse-link acc. to standard: IEC / HD 60269-2
permitted power dissipation of the fuse-link: 34 W

Details IEC

Standards

IEC 60947-1:2007 + A1:2010 + A2:2014

IEC 60947-3:2008 + A1:2012 + A2:2015

GB/T 14048.3

Electrical data IEC

Rated current (IEC): 400 A

rated voltage (IEC) AC: 690 V

rated isolation voltage U_i AC: 1000 V

rated surge voltage U_{imp} : 8 kV

Utilisation category AC (IEC 60947-3): AC-23B 400A/400V

AC-22B 400A/500V

AC-22B 400A/690V

AC-21B 400A/690V

Utilisation category DC (IEC 60947-3): DC-20B

max. voltage between the fuses: 1000V

visible information required: Do not switch under load.

cond. short-circuit current with fuses (AC): 100 kA / 690 V

120 kA / 500 V

approved with fuse links of operation class: gG

power dissipation of the article:

The power dissipation at a typical load of 80 % of the rated current results to 38.4 W.

(The power dissipation for operation with rated current would be 60 W.)

A fuse-combination unit acc. to IEC 60947-3 can only be operated at a higher voltage than its rated voltage, if it is used as a fuse-disconnector without breaking capacity, up to its max. rated insulation voltage and labelled as such.

for fuse links IEC 60269-2-1 (I) / DIN VDE 0636-201 size 2 up to 34W power dissipation

Degree of protection IP20 at front, degree of protection near terminal depends on installation

Mechanical data

W x H x D: 99 x 670 x 189

weight: 502 kg/100

poles: 3-pole

for busbars: 30, 40, 60, 80, 100, 120 x 10

CT can be integrated in the device: ja

CT can be integrated in the CT module: ja

front degree of protection: IP20

Type of fastening:

can be screwed onto drilled busbar, diameter 13mm, undrilled mounting with terminal clamp

connection:

screw connection M12

Terminal points

screw M12 :

Md 30 Nm

Material properties

Main body:	temperature stability 130°C, self-extinguishing in acc. to UL 94, creepage resistance CTI 600, halogen-free
Contacts:	spring-loaded copper contacts, silver plated
Shock protection cover:	temperature stability 125°C, self-extinguishing in acc. to UL 94, creepage resistance CTI 600, halogen-free
Handle:	temperature stability 125°C, self-extinguishing in acc. to UL 94, creepage resistance CTI 600, halogen-free
Connecting screws:	screw M12, galvanized, chromized

Reference

The terminal compartment cover 33733 is always needed for the connection at top and when using cable lugs.

Accessories



33735
box terminal
for Cu and Al 70 - 240 mm²
size 1 - 3
for: Cu / Al 70 - 240 mm²



33733
terminal compartment cover
universal for NH-rails size 1 - 3 and connection rail 800 A
size 1- 3



33738
CrossLink® terminal clamp
for busbar systems with CrossLink® touch-safe protection
size 1 - 3



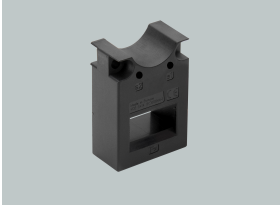
33740
terminal clamp
for busbar systems without system covers
size 1 - 3



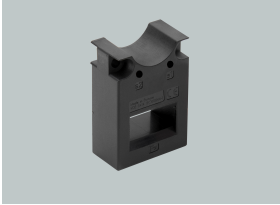
33744
current transformer 150 A / 5 A
1.5 VA / class 1
size 1 - 3



33745
current transformer 200 A / 5 A
1.5 VA / class 1
size 1 - 3



33746
current transformer 250 A / 5 A
2.5 VA / class 1
size 1 - 3



33747
current transformer 400 A / 5 A
2.5 VA / class 1
size 1 - 3



33292
current transformer 200 A / 5 A
1.5 VA / class 0.5
size 1 - 3
stock sale



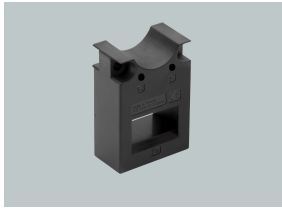
33156
pilot switch
changeover 250 V AC / 5 A, 30 V DC / 4 A



33758
lateral bearing strip
for front covers
size 00 - 3



33736
box terminal
for Cu and Al 120 - 300 mm²
size 1-3
for: Cu / Al 120 - 300 mm²



33748

current transformer 600 A / 5 A
2.5 VA / class 1
size 1 - 3



33761

rear touch-safe protection cover
rear protection for Phase L1



wöhner

33293

current transformer 200 A / 5 A, with decl. of conformity
1.5 VA / class 0.5
size 1 - 3
stock sale



33294

current transformer 250 A / 5 A
2.5 VA / class 0.5
size 1 - 3
stock sale



33295

current transformer 250 A / 5 A, with decl. of conformity
2.5 VA / class 0.5
size 1 - 3
stock sale



33298

current transformer 400 A / 5 A
2.5 VA / class 0.5
size 1 - 3
stock sale



wöhner

33299

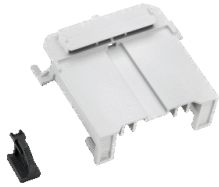
current transformer 400 A / 5 A, with decl. of conformity
2.5 VA / class 0.5
size 1 - 3



33762

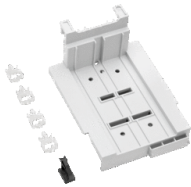
universal current transformer module
for mounting in the connection compartment
size 1 - 3

particular article



33768

plug support with mounting rail
for CT wiring
size 1 - 3



33769

component support with mounting rails
for fuse monitor and CT wiring
size 1 - 3



33776

universal current transformer module
for mounting in the connection compartment
size 1 - 3

coming soon